

In this kit is all you need to make a beautiful skirt, beautifully!

The skirt pattern is printed directly onto the fabric and each kit has a choice of sizes, which can be tailored to fit. A lining is provided and you can make the skirt with or without facings (these are the unseen panels that form the inside of the waistband). Extra ribbons and contrast stitching can also look fun - personalise just as you like! A handmade garment is very different from a high street readymade. Take time, enjoy it – it really is special.

General Instructions

Before you start please read ALL the instructions carefully.

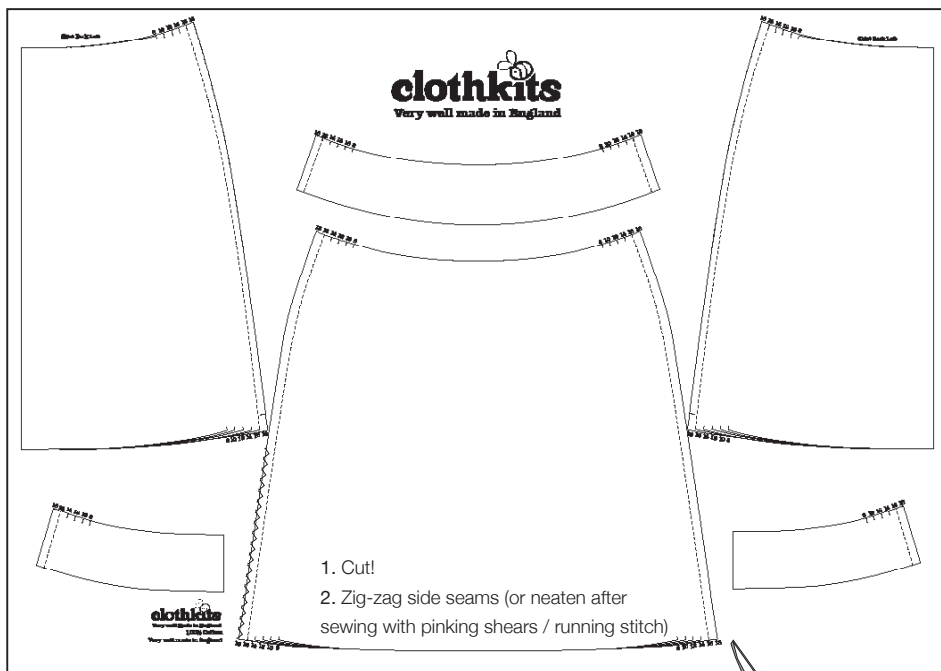
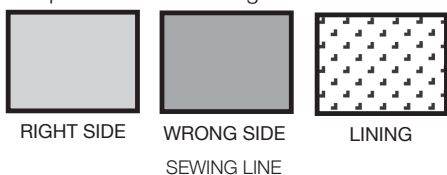
The printed lines on the pattern are the cutting lines and these include the seam allowance.

The seam allowances are 1.5cm unless otherwise indicated (that is the bit between where you cut and where you stitch)

The hem allowance is 3cm, though you can adjust this to suit your preference.

Sew between 3 to 5 stitches per cm.

The printed side is the 'right side'.



Kits can be cut out by following the line indicated in the key for the size required. The smaller sizes are marked by a pointer (this is because a printed line would be visible if kit was made to the largest size). Cut smaller sizes parallel to the outer size guides - Tailor's Chalk can be handy to mark this out first.

It can be useful to place the pins at right angles to the sewing line as this makes it easier for them to be removed as you sew. When trying on for size however, place the pins parallel to the sewing line.

To 'tack' means to make a long, temporary stitch that will keep the fabric in the right position before you machine stitch. You can do this by adjusting your machine stitch length to the longest setting.

If you do not have a zig zag stitch for neatening seams then you could just sew a line of running stitch along the seam. Pinking shears can also help prevent fraying. Use these after sewing the seams. Corduroy fabric is not so prone to fraying and so this can be omitted.

A few back stitches when commencing sewing will ensure that your stitches don't unravel.

Don't skip the pressing stages – it really makes a difference to the finish of the garment. Get out the iron! And of course the board too.

Do keep an eye on our website (www.clothkits.co.uk) and swap sewing tips with fellow Clothkittens in the forum.

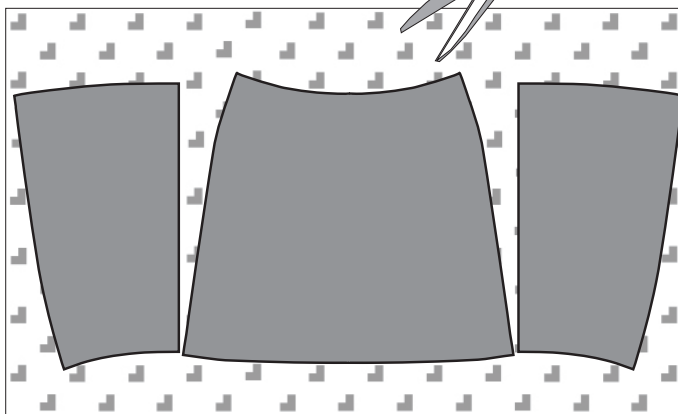
Because we use natural fabrics, some degree of unpredictable 'shrinkage' may occur during the process of printing. This may result in minor discrepancies between pattern pieces. The instructions below detail the key areas to line up for an even finish.

Right, let's get going! You should be able to make the garment in an evening or two, and is achievable for both the novice and more experienced stitcher alike.

MAKING YOUR SKIRT

1. Cut and neaten

Identify the pattern pieces. Cut out required size, joining the size lines where not visible. Optional - zig zag stitch (or overlock) along the cut side seams to stop excessive fraying. Pin together using 1.5cm seam allowances. Try on and adjust fit if necessary.



2. Lining. Lay three main skirt pieces on lining, pin into position and cut out. You do not need to cut out lining pieces for the facings.

3. Facings.

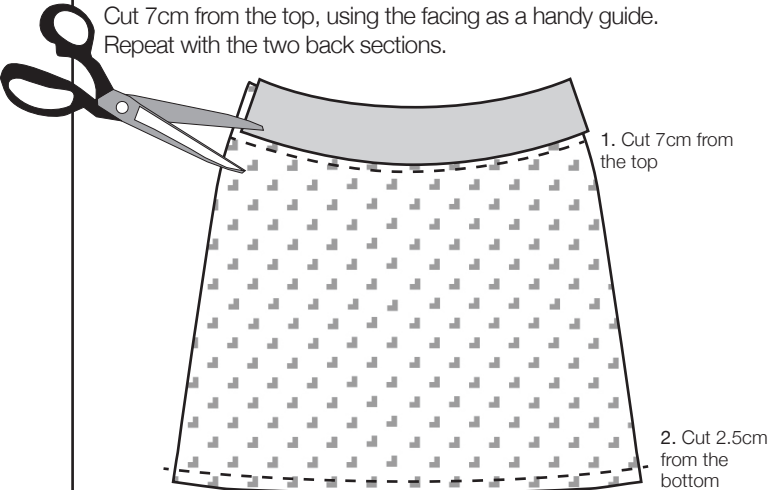
What is a facing I hear you ask? The facings are the three smaller gently curved pattern pieces which are not seen on the outside of the skirt once it is worn. You could describe them as the inside of the waistband. The facings form the top of the lining, and give a lovely professional finish to the skirt. For new sewers you might like to make the skirt without facings at all as this is slightly easier (so rather than have a lining that is part lining material and part facing you will have a lining that is all one fabric). If you wish to do this then you should cut the linings to be the identical size of the main skirt pieces and omit stages 3 and 4.

We are going to cut the lining down to allow for the facing, and also trim a little off the hem so that the lining stays above the hem of the skirt.

Cut 2.5cm from lining of hem.

Cut 7cm from the top, using the facing as a handy guide.

Repeat with the two back sections.



4. Attach facings to linings.

You will need to smooth it round the curve as you are attaching a concave bend of the lining to a convex curve of the facing (which might look a bit unnatural but works!). What you are trying to achieve is a finished section of lining/facing that is identical in shape to the top of the skirt outside section.

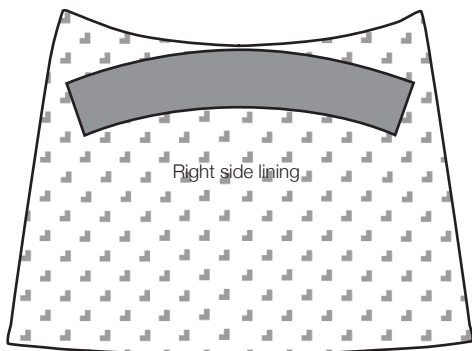
Right sides together, pin the bottom edge of the facing to the top of the lining. You will need to smooth it round the curve a bit.

Stitch into place using a 1cm seam allowance only.

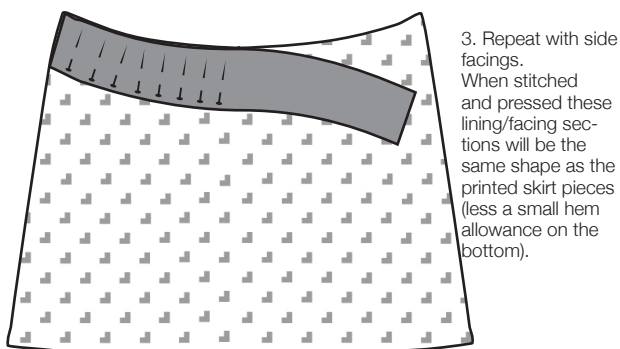
Press seam open.

Repeat with other two skirt lining sections.

1. Lay the facing on the lining. Before you pin the curves will look like this.



2. Pin together, easing the fabric around the curve.



5. Centre back seam

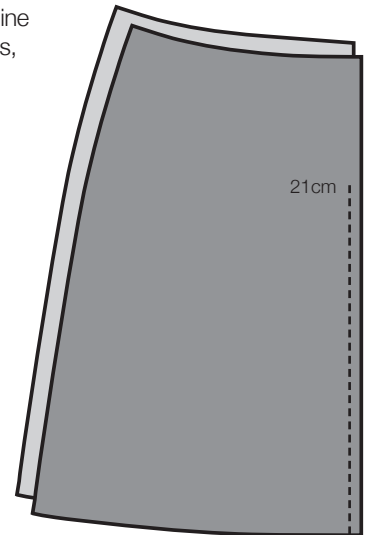
Take the skirt back sections and line up the straight centre back seams, right sides together.

Pin together.

Mark 21cm down from top (zip opening).

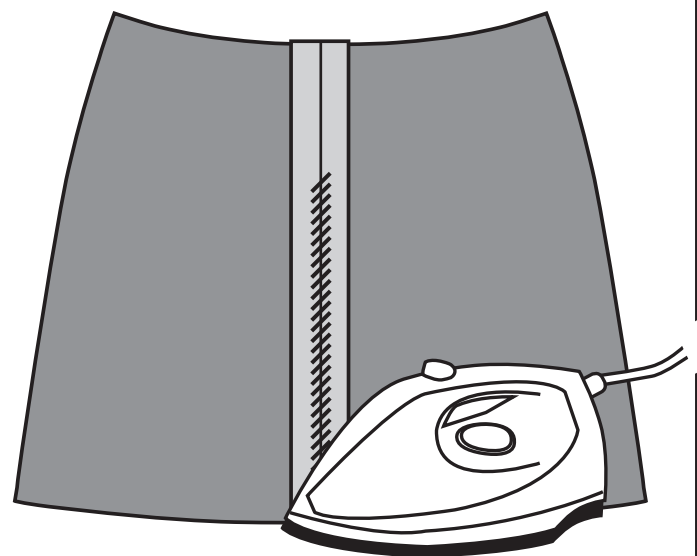
Then sew from this point down to hem using a 1.5cm seam allowance.

Press the seam open from the bottom to the top (as if you had stitched up the zip opening too).



Press seam open from bottom to top

sew centre back seam



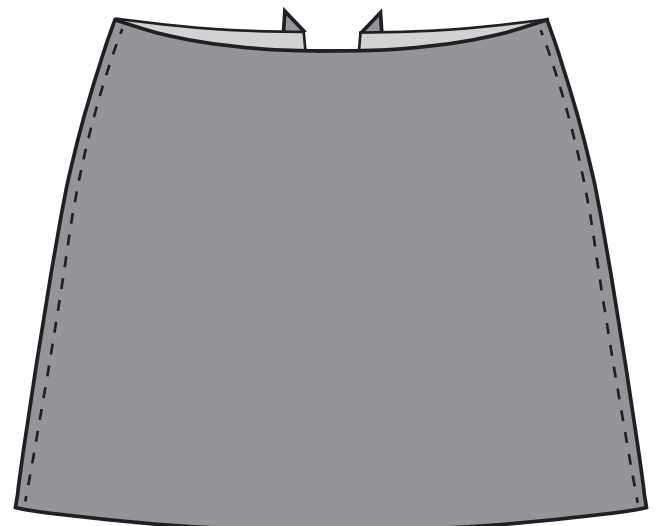
6. Side Seams

Right sides together pin the skirt front to the skirt backs down both side seams.

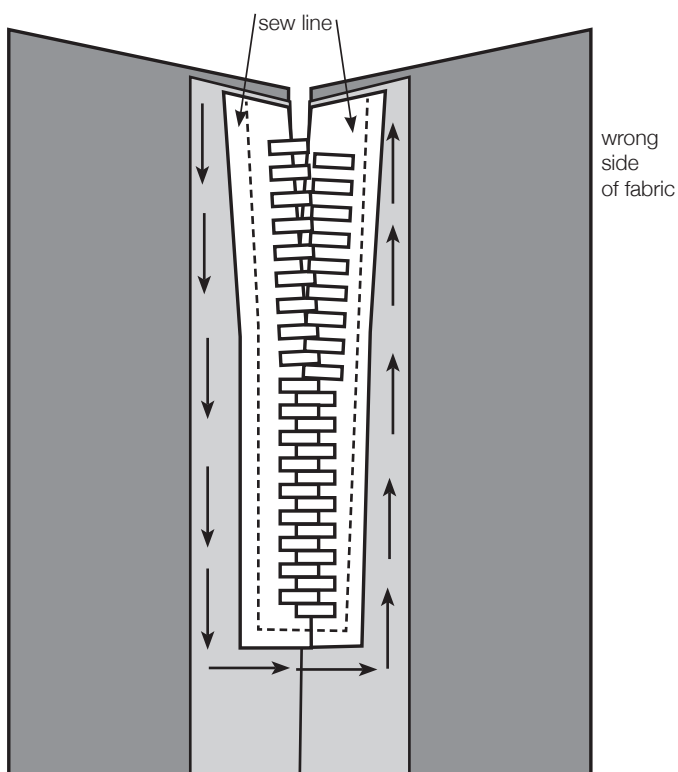
Then sew together using your 1.5cm seam allowance.

Press open seams.

Repeat steps 5 & 6 with lining.



7. Zip. Take the main skirt piece and lay it out in front of you with the wrong side of the fabric facing upwards. Have the zip opening at the top (with the seams pressed back from point 5). Open the zip fully to start and lay the zip face down on top of the opening (so that you cannot see the zip pull). Pin the zip into position, keeping it straight and even. Do you have a zip foot with your machine? If not, hand sew. A zip foot is a one sided foot that can be adjusted to use for sewing on the left or right hand side of the needle. Pop this into your machine so that the needle is to the right of the foot. Start on the left hand side and position your needle so that it is in the centre of the zip fabric, as close to the teeth as you feel comfortable. Stitch down carefully to the bottom of the zip. It can make it easier if you close the zip when you are almost to the bottom of the zip (do this with the needle down through the fabric so that you do not lose your position). This means that you can continue to sew in a straight line. Sew across the bottom and then back up the remaining side of the zip, moving the zip pull as necessary to keep the sewing line straight.



you should not be able to see the zip pull

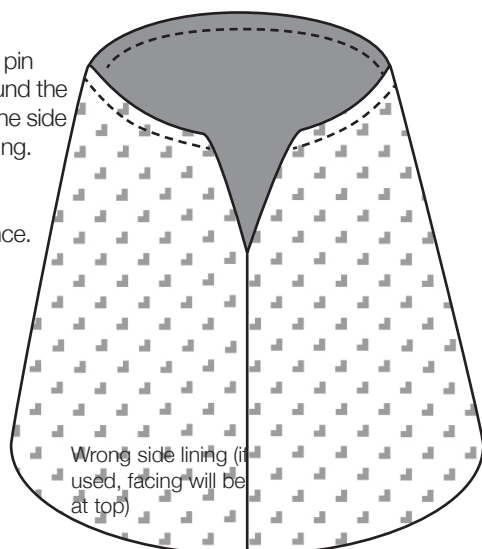
9. Join the lining to the skirt

Open zip.

Right sides together, pin lining to the skirt around the waist, matching up the side seams and zip opening.

Sew around using 1.5cm seam allowance.

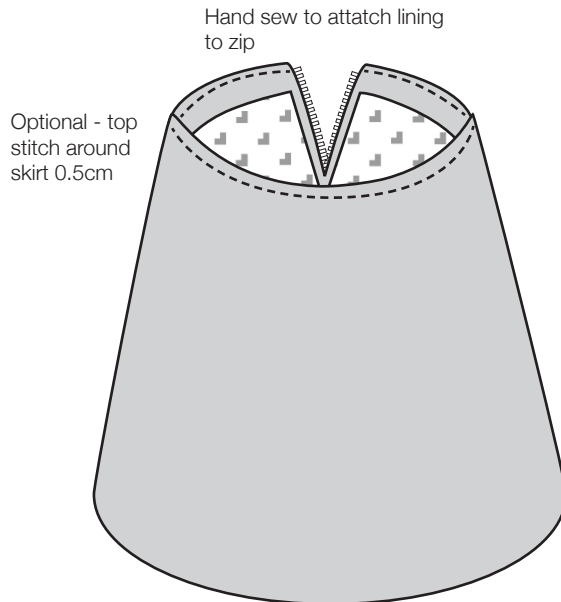
Turn through and tuck corners of zip into fold to neaten.



10. Attach lining to zip

Hand sew the lining to the zip on the fold, encasing the raw edges. Press everything thoroughly.

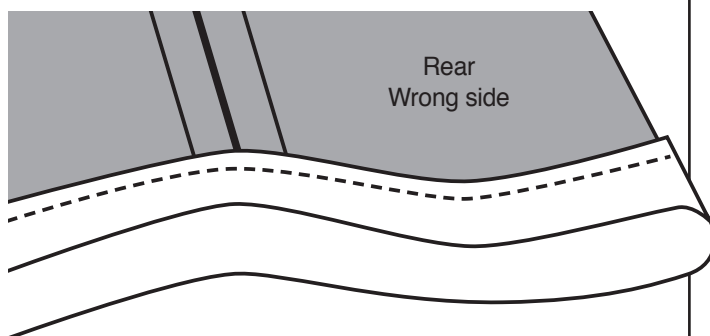
Then topstitch around waistband 0.5cm from edge with your machine. Most lines that we sew when dressmaking are invisible – that is they disappear into the seam. A topstitch is designed to show and will be clearly visible on the outside of a garment. A contrast colour of topstitch can be used purely for decorative effect and add a pretty bit of detail. **This topstitch is optional but gives a nice finish.**



11. Hem skirt

Fold over the raw edge of the hem 1cm, then 2cm for a neat finish. Check that the hem is even all the way around and then press and pin. Sew all around keeping your stitch line an even distance from the hem

Repeat this with the lining to finish.



■ Put on skirt and grin...a large cheesy grin!



www.clothkits.co.uk

Clothkits Limited, PO Box 618, Chichester, West Sussex, PO19 9GR. United Kingdom